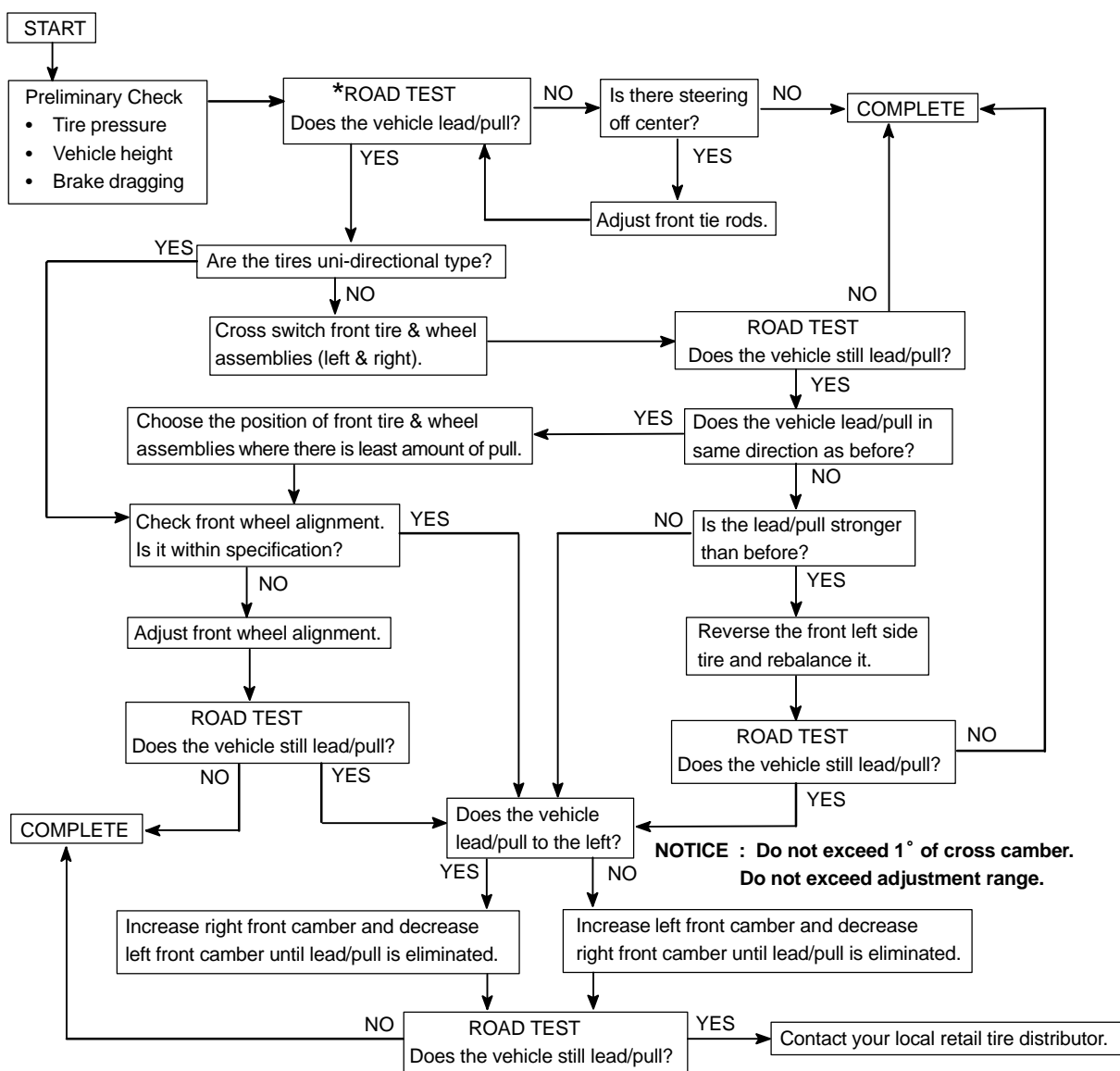


REPAIR

HINT:

This is the repair procedure for vehicle pull.



*Select a flat road where the vehicle can be driven in a straight line for 100 meters at a constant speed of 35mph. Please confirm safety and set the steering wheel to its straight position. Drive the vehicle in a straight line for 100 meters at a constant speed of 35 mph without holding the steering wheel.

(1) The vehicle can keep straight but the steering wheel has some angle.

————→STEERING OFF CENTER (See page 50-4)

(2) The vehicle cannot keep straight.

————→STEERING PULL